

**What difference
has the West
Somerset
Opportunity Area
made 2017 to
2021**

**Julia Ridge
Scrutiny Nov
2021**



West Somerset Opportunity Area. What difference have we made?

Author: Julia Ridge
Strategic Manager
Education Systems



- **Key points for discussion**
- Why West Somerset?
- Where have we succeeded and where are the Challenges?
- Are there still issues?
- Legacy and what is next?

- **Ask of Scrutiny**

Note the:

- successes and whether they can be shared beyond West Somerset
- challenges still faced by West Somerset
- Consider if the learning is beneficial for other Somerset Communities

Social Mobility Index 2017 – 324 Authorities

Child poverty across the peninsula – a working poor problem?

Local Authority	Region	Over all score	Early Years	Schools	Youth	Adulthood
Key	Below 250 of 324 Authorities					Dorset
West Somerset	South West	324	324	194	195	324
Mendip	South West	231	284	125	142	242
Weymouth and Portland	South West	322	261	316	206	315
Sedgemoor	South West	258	173	226	229	279
South Somerset	South West	229	208	127	249	240
Taunton Deane	South West	206	251	177	128	187

Child Poverty in the South West 2019/20:

- Cornwall – 29% (Truro and Falmouth); 37% (North Cornwall)
- **Somerset – 26% (Taunton Deane; Yeovil); 33% (Bridgwater & West Somerset)**
- Devon – 22% (South West Devon); 34% (Torridge & West Devon); Exeter – 26%
- Plymouth – 32% (Moor View); 34% (Sutton & Devonport)
- Torbay – 32%
- **UK average – 30%;**
- **SW average – 25%**
- **Key Above the South West Average**
- **Above the UK and South West Average**

The programme:

4 key areas

Early Years

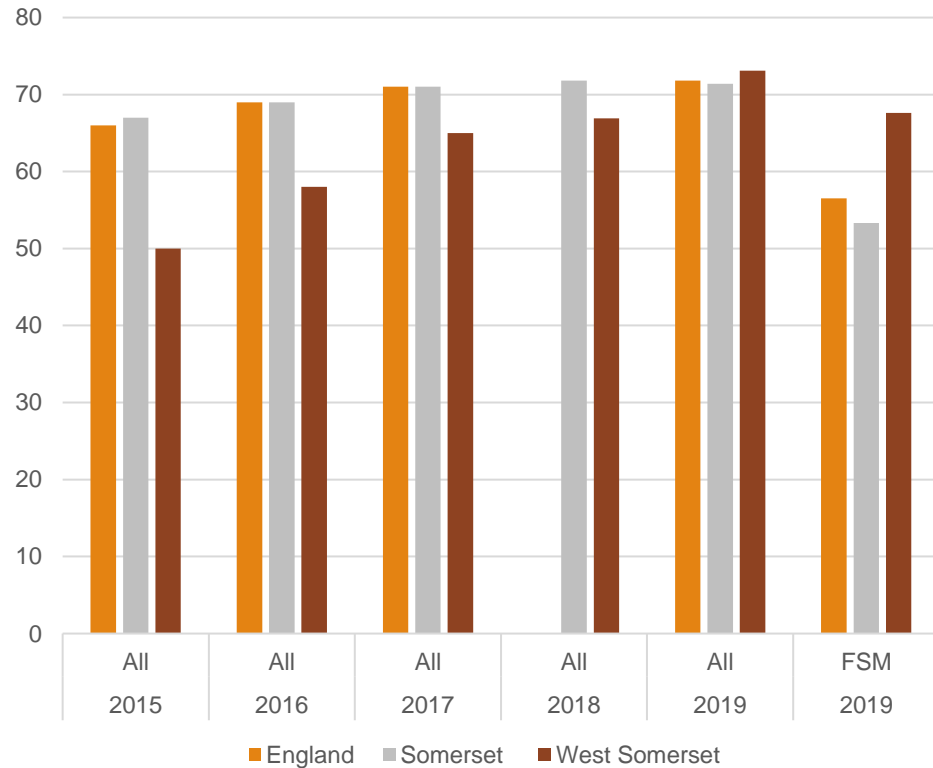
Excellence in the Classroom

Transition to Adult hood

Business and Enterprise

Good Levels of Development inc Free School Meals Year 1

Good Levels of Development Free School Meals



- **good maternal mental health working** with CCG and Public Health
- **learning activities, including speaking to your baby and reading with your child** working with ICAN and Home Start
- **enhancing physical activity** working with Youth Sports Trust and Healthy Movers
- **parenting support programmes** working with Home Start, PEEP, Tunning into TOTS, Exmoor National Park and Families Unite through Nature
- **high-quality early education** working with all our preschools and Nurseries investing in physical activity, maths, speech and Language and SEND
- [Healthy Movers - tackling school readiness through play - YouTube](#)
- [Slide 1 \(publishing.service.gov.uk\)](#) Improving school readiness Creating a better start for London 2015
- FSM Free School Meals

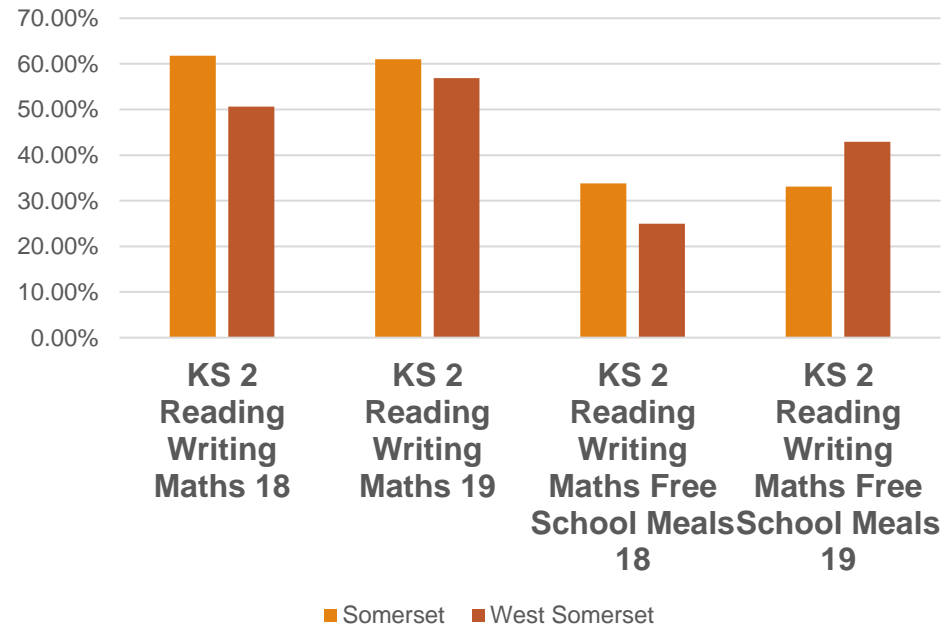
Excellence in the Classroom

Remember our young people

Yr 1 GLD	KS 2	Transition to Upper School	KS4
2013 35% GLD	2018	2021 Covid	2023
2015 50% GLD	2020 Covid	2023	2025
2019 71.4% GLD	2024	2027	2029

Key stage 2

Key Stage 2 Reading, writing and Maths
2018 2019



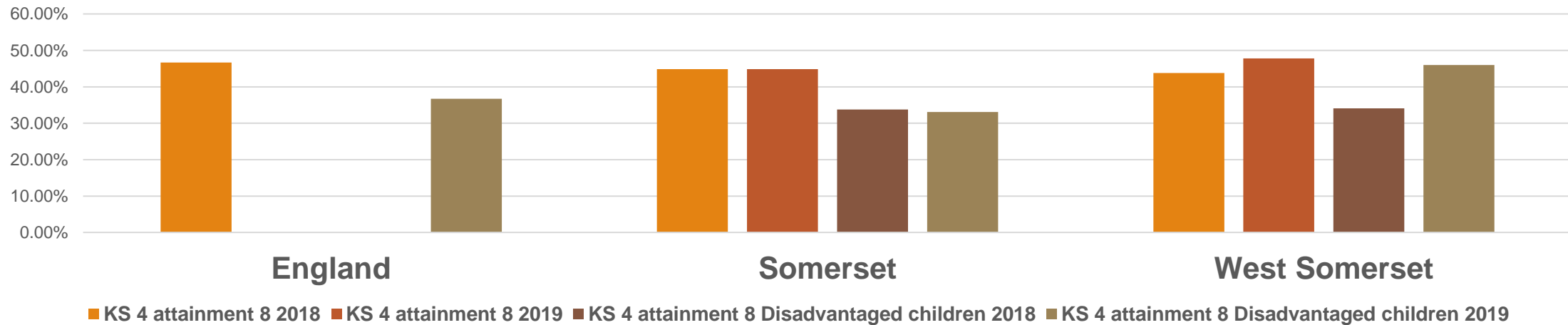
Focus for Schools

- Leadership and Governance
 - Quality First Teaching: Maths
 - English
 - Meta Curriculum
 - SEND Trauma Informed Schools
 - Pupil Premium
 - Behaviour Partnership
 - Transitions
-
- **Challenges**
 - Lack of Capacity
 - Complexities of a number of multi - academy Trusts
-
- **What did we do:**
 - Used National Programmes
 - Evidence based Programmes
 - Delivered in West Somerset

- **Trauma Informed Schools**
- **Why – Higher levels of exclusions and Elective Home Educated Children in the community** - The Trauma Informed Schools programme enables and empowers school staff to respond to mild to moderate mental health problems supporting pupils remain engaged in learning.
- **What we did** - We created an area wide model, including schools, outreach workers and a key community organisation and offered training at SLT and practitioner level to ensure that the programme would be embedded at all levels.
- **Our Success** - area wide SLG that will lead the work to ensure that behaviour / relational policies are underpinned by Trauma informed approaches. 24 trained practitioners .. "the best CPD they have ever had".
- We wait to see the data for the difference to children...

Key Stage 4 and Vocational Training

KS 4 Attainment data 2018 and 2019



Priority 4: Skills for employment and business

Every young person in West Somerset should be equipped to succeed in the world of work. This is why we will ensure that every school pupil in West Somerset gets four excellent experiences of work and will invest in adult skills.

Stage	Metric	Performance	Rank
Adulthood	Median weekly salary (£) of employees who live in the local area, all employees (FT and PT)	311.80	324
	Average house prices compared to median annual salary of employees who live in the local area	8.48	215
	% of people that live in the local area who are in managerial and professional occupations (SOC 1 and 2)	23.10	279
	% of jobs that are paid less than the applicable Living Wage Foundation living wage	41.35	324
	% of families with children who own their home	51.59	283

Community	% Keyworkers
West Somerset	51%
Taunton Deane	41.3%
Sedgemoor	27.5%
Mid Devon	27.7%

Key workers:

- Health and Social Care
- Education and Child care
- Utilities and Communications
- Food and necessary goods

[Coronavirus and key workers in the UK - Office for National Statistics \(ons.gov.uk\)](https://www.ons.gov.uk/coronavirus/key-workers)

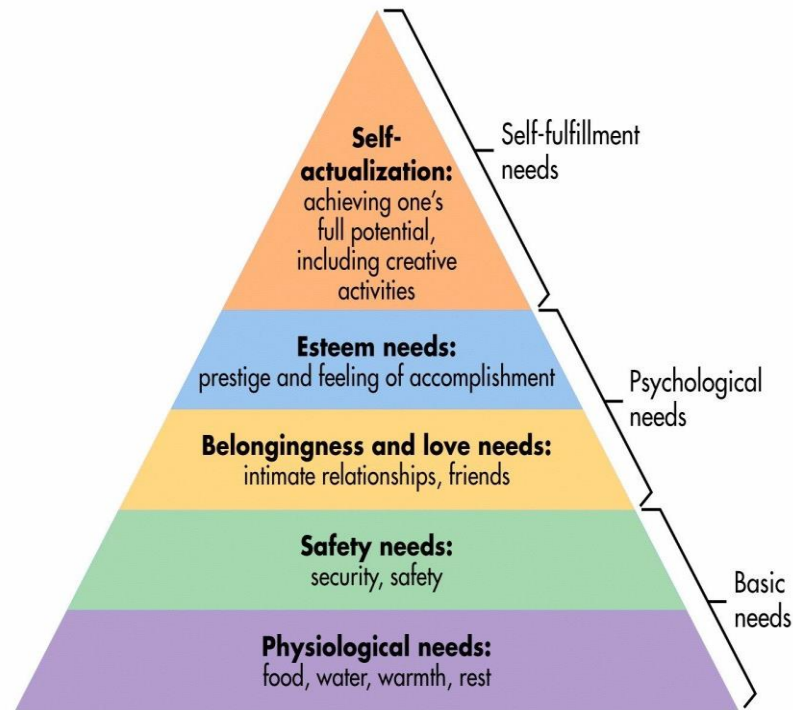
Covid Knowledge: 51% of West Somerset Workers are Key workers – highest in the Country.

Who has contributed to the West Somerset Success?

Self - Actualisation

Skill Up WS
Somerset Works
Raising Horizons Project
DWP
SCC Education Business
Partnership
Sparks
National Careers Service
Minehead BID
YMCA Dulverton

Schools/college/Partnership
Outdoor Curriculum –
Kilve
EY SEND Services
South West Heritage Trust
Quantock AONB
National Trust
Contains Art/Onion Collective
Regal Theatre
InspireED
Somerset Art Works
NCS
Lifebeat



Belonging and Love

Homestart
Minehead Eye
Clowns
Exmoor FUN project
Church groups
Exmoor Young Voices
Trauma Informed Practitioners – area strategy
SENDIAS
SENCO Network
WS National Trust

Physiological

Fareshare / Incredible Edible
Allotment Society
Magna / Livewest / SWT Housing
YMCA Dulverton
P2i
Living Better (West Somerset Healthcare including GPs/ HVs / CAMHS/Health Coaches)
Village Agents
Outreach Team
Young Somerset
Lifebeat
CYP Somerset Health
Early Years (EY) Providers
Somerset Activity Sports Partnership
Youth Sports Trust

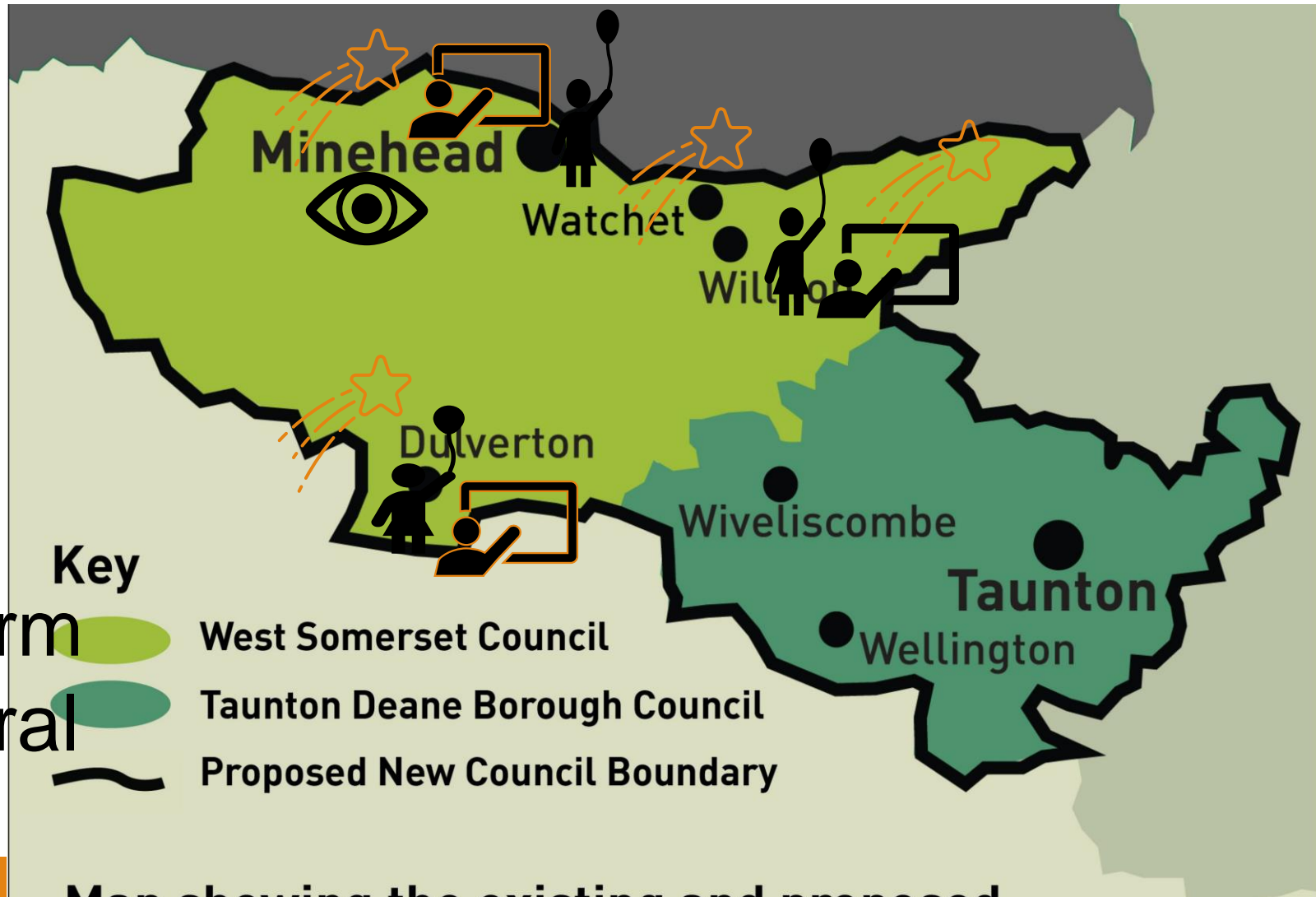
Safety

Team around the School
One Team
AS Police Violence Reduction / Topaz
Somerset Safeguarding Children Board / SIDAS
Village Agents
West Somerset Advice Bureau
WSEP
CYP Panel
Outreach Team
Project ONE
Kilve
Chanel
Education Safeguarding Service

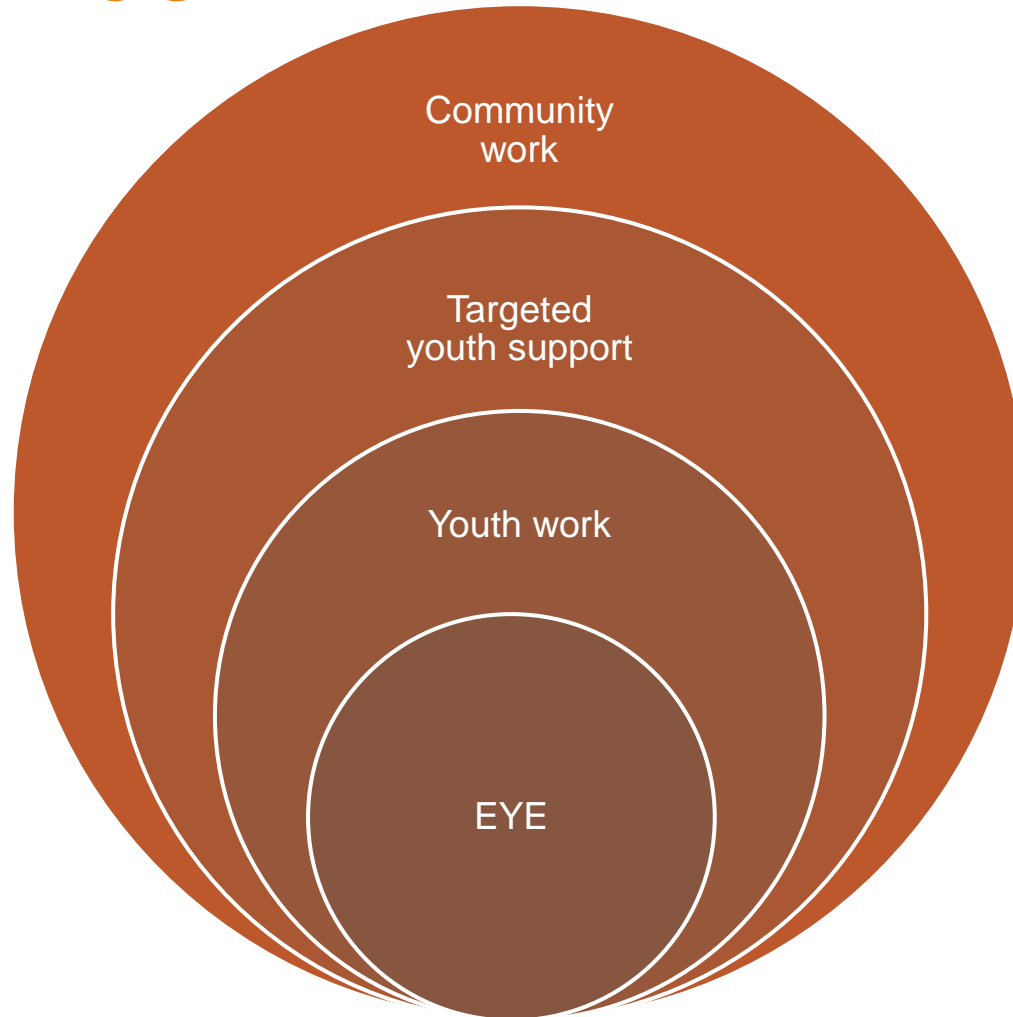
Challenge: Access to and revenue costs of premises

Developing community resources

Maximising
Potential:
Kilve
East Quay
Minehead Farm
Dulverton Rural
Access Point



Minehead Eye - From a facility into a service



Resilience and Wellbeing
Funding

£211,248 HPC

Lottery Covid Support in partnership
with Home Start and Clowns

Lottery in partnership with Home start

£460k

Not in Education Employment or Training

- Priority 3 – Transition into Adulthood



This Photo by Unknown Author is licensed under [CC BY-SA](https://creativecommons.org/licenses/by-sa/4.0/)

£150,000 for Summer Activities for all Year 11 Students in Somerset

European Social Fund **£700k**

Somerset Recovery Grant **£1.7m**

Moped grant ☹️



Community Food

- Partnership with Fareshare – started in West Somerset – Countywide
- Village Agents creating a “Food task force”
- 44 Community Groups feeding their Communities.
- Dulverton Good Neighbours, Exmoor National Park
- Dulverton, Dunster and Kilve Cooking Weekly
- Wivey Food – 300 plus meals cooked weekly
- Food banks
- Debt management and advice
- As a County we have always been able to send food to a family who asked for help.

260 Pallets of food



800,000 meals



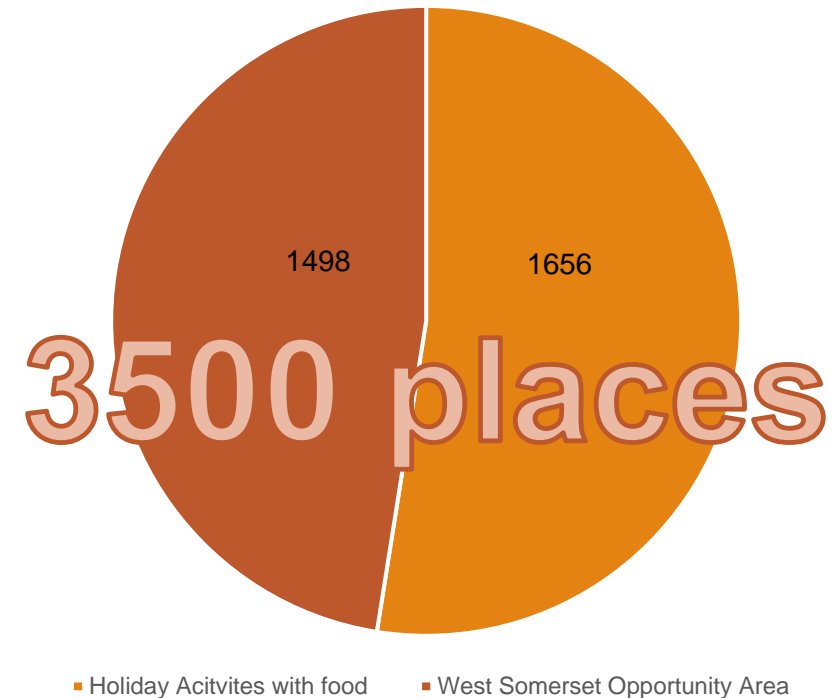
This Photo by Unknown Author is licensed under [CC BY](#)

[Facebook](#)

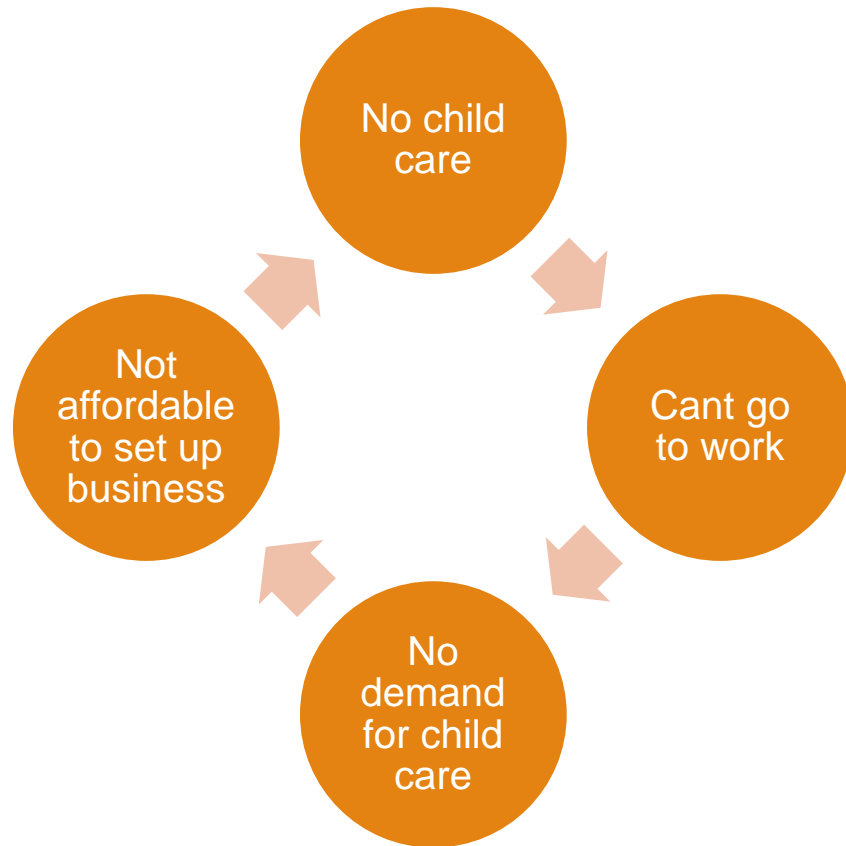
Low demand for childcare in West Somerset ?

- West Somerset has very poor access to affordable child care
- Data shows underemployment of women
- Limited access to child care as not a viable service to offer as no demand
- OA test and Lean, building on Holiday Activities with Food 2021
- 51% of working population are key workers

Child Care Summer 2021



Child care, Holiday Activities – help for working parents.



- **1158 places for families on universal Credit and could access up to £35 a day for childcare. £40,530 for 6 weeks**
- If you are eligible, your childcare costs will be included and paid as part of your Universal Credit payment. You will receive up to 85% of the childcare costs you pay, up to a maximum monthly limit of:
 - £646.35 for one child
 - £1108.04 for 2 or more children
- [Universal Credit: childcare guide - GOV.UK \(www.gov.uk\)](https://www.gov.uk/universal-credit-childcare-guide)

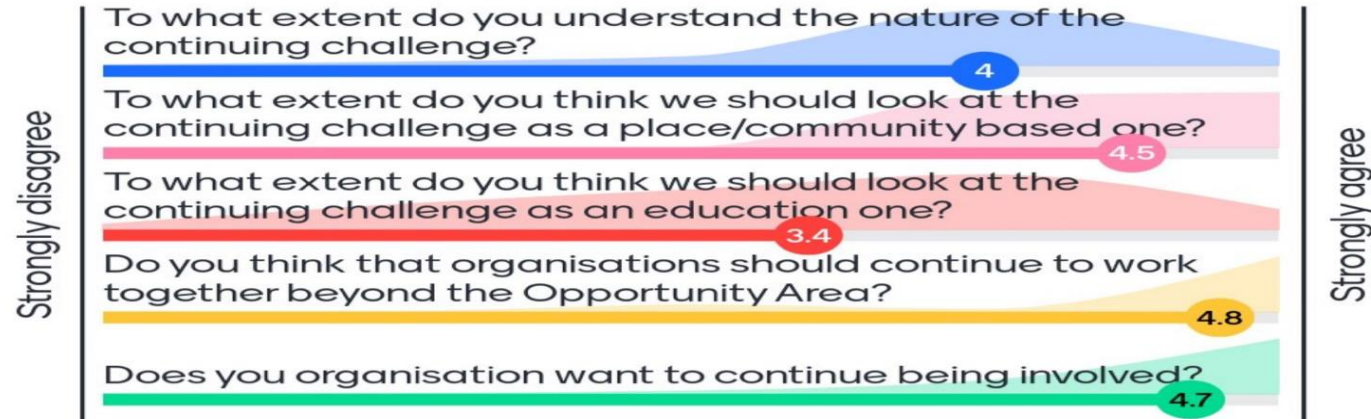
Take up of Holiday Activities with food, with Additional places offered for working families not entitled to Free school meals..

Provider	Total	Places Funded from Holiday with Activities	Difference funded by the OA	Percentage take up
West Somerset Academies Trust	1955	640	1315	305%
Stogursey Happiness Holiday Club	450	224	226	201%
Minehead EYE	530	280	250	189%
Number 1 West Somerset	358	292	66	123%
West Somerset College Sports Centre	9	45	-36	20%
Premier Education Somerset Dulverton Multi Activity Camp	124	160	-36	78%

Conference feedback 4th October 2021

Legacy Questions - Set 1

Delegates were asked the questions shown and selected a number on a scale from 1-5 for each. The mean result for each is shown in the circle and the colour behind represents the distribution.



Data:

Response:	1	2	3	4	5	Abs
N=	0	1	5	19	5	1

Response:	1	2	3	4	5	Abs
N=	0	0	0	14	15	0

Response:	1	2	3	4	5	Abs
N=	1	5	8	11	4	0

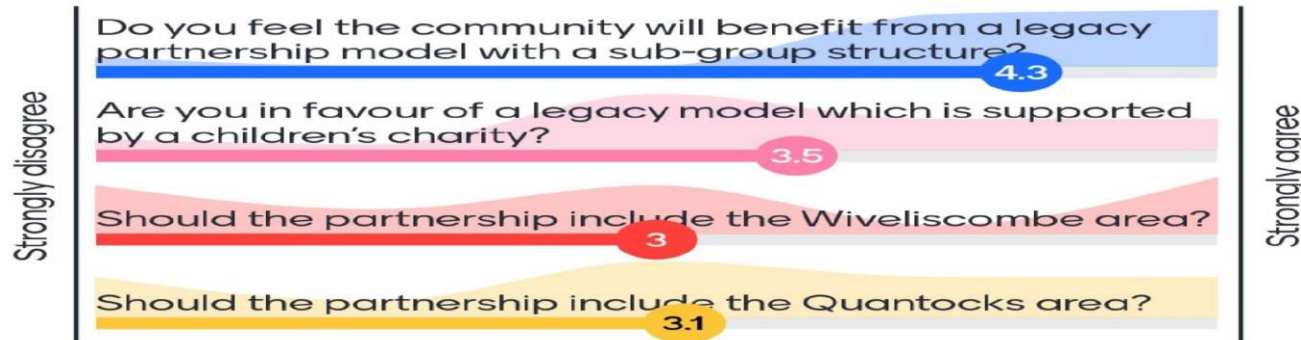
Response:	1	2	3	4	5	Abs
N=	0	0	3	1	25	0

Response:	1	2	3	4	5	Abs
N=	0	0	1	5	21	2

Responses: 29
www.mentimeter.com

Legacy Questions - Set 2

Delegates were asked the questions shown and selected a number on a scale from 1-5 for each. The mean result for each is shown in the circle and the colour behind represents the distribution.



Data:

Response:	1	2	3	4	5	Abs
N=	2	0	0	12	13	0

Response:	1	2	3	4	5	Abs
N=	2	1	11	6	6	1

Response:	1	2	3	4	5	Abs
N=	6	3	6	1	7	4

Response:	1	2	3	4	5	Abs
N=	5	2	7	5	5	3

Responses: 27
www.mentimeter.com

How we would like to work

We ensure the five collective impact conditions are in place in each community where we work, to enable us to apply our Theory of Change and support place-based transformation.



Key Themes to be addressed: Professor Lee Elliott Major

- Rurality and in particular access to employment and training
(local training provision and transport)
- Supporting educational attainment and training
- Digital inclusion
- Raising aspirations of young people
- Creating employment opportunities within the local area
- Support within the home with provisions, support, housing
(child care)
- Models of delivery - **partnership between colleges and partnerships with the voluntary sector.**

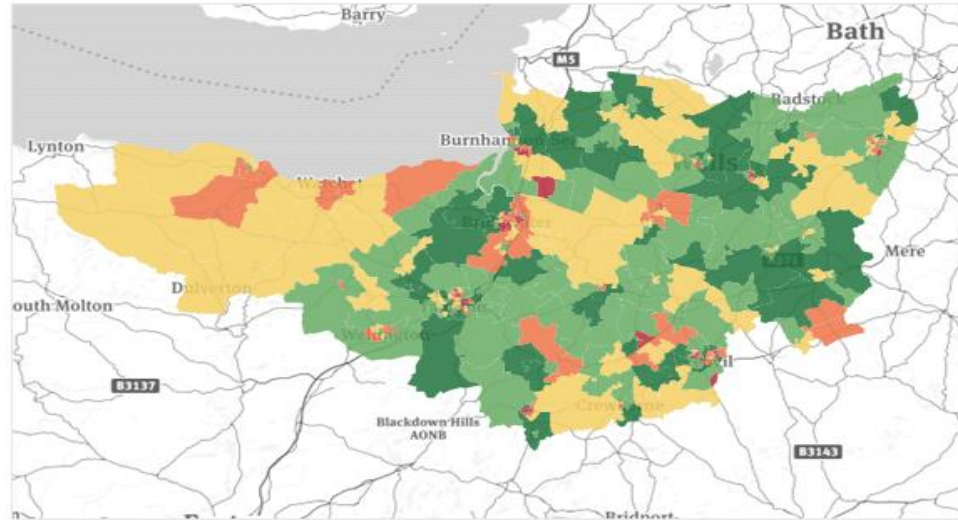
What have we learnt?

- **Lesson 1** Data at community level is vital to see the differences
- **Lesson 2** Data specifically for what it is like for families with children is key
- **Lesson 3** Invest in proven packages eg ICAN, Read Write Inc,
- **Lesson 4** Value and respect local voluntary organisations like Home Start and Minehead Eye
- **Lesson 5** Ensuring Language and Communication skills in our Early years is key
- **Lesson 6** Our small schools have very little capacity and therefore need to work collaboratively
- **Lesson 7** Trauma Informed Schools Diploma is very powerful CPD for school and voluntary sector Staff
- **Lesson 8** Working with a number of Academy Trusts requires strong partnerships
- **Lesson 9** Good CPD can be taught virtually
- **Lesson 10** Vocational Training is difficult to access for our most in need, No Adult training prevents the offer of a second chance
- **Lesson 12** Cost of Transport is prohibitive but lessons can be undertaken virtually from local points
- **Lesson 13** Childcare is affordable for parents on Universal credit
- **Lesson 14** Housing is a challenge in rural areas
- **Lesson 15** Maslow's triangle is a very effective way to describe the needs of a community
- **Lesson 16** Need for community facilities for partners to operate from

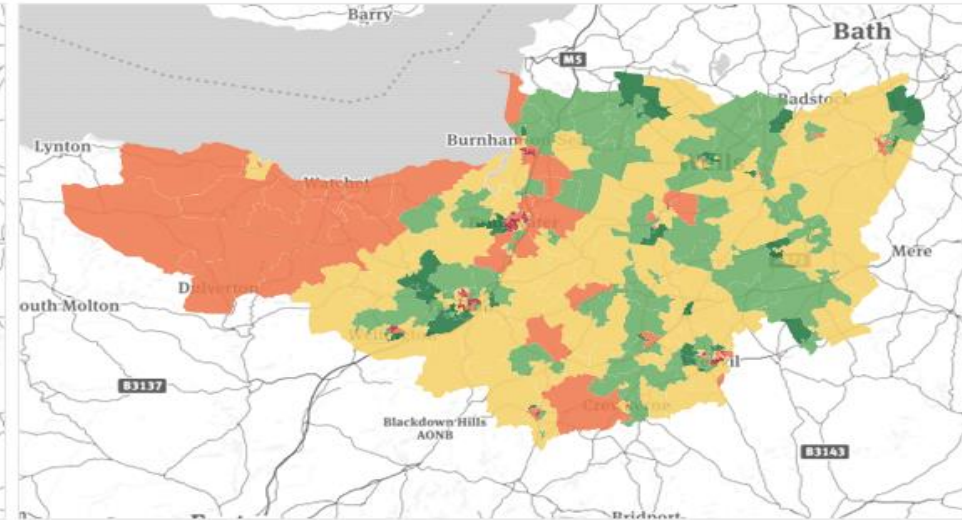
Extra Reading - Data

- Includes
- More data on poverty and how it changes across Somerset and the difference between households with children and those without.
- Education attainment across the South West disadvantage gap
- Access to Post 16 and Adult training

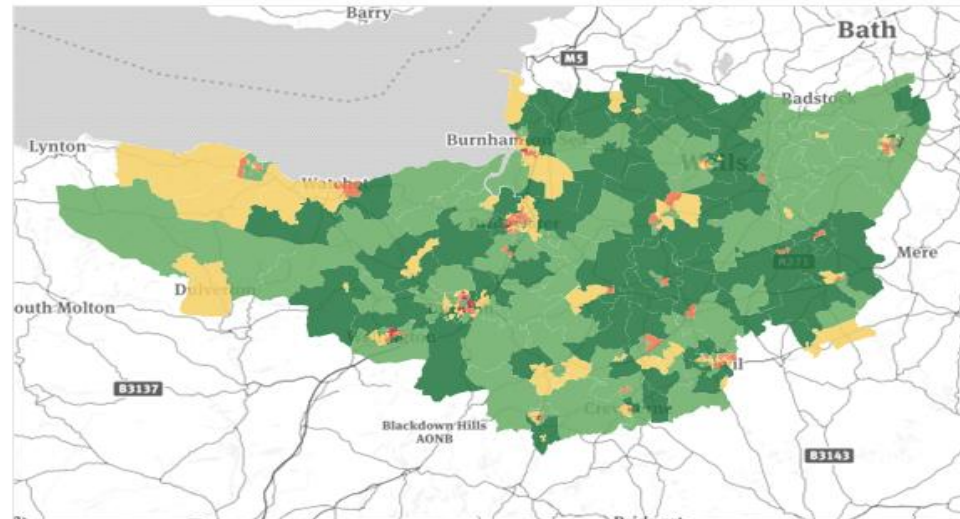
2019 IDACI Deciles



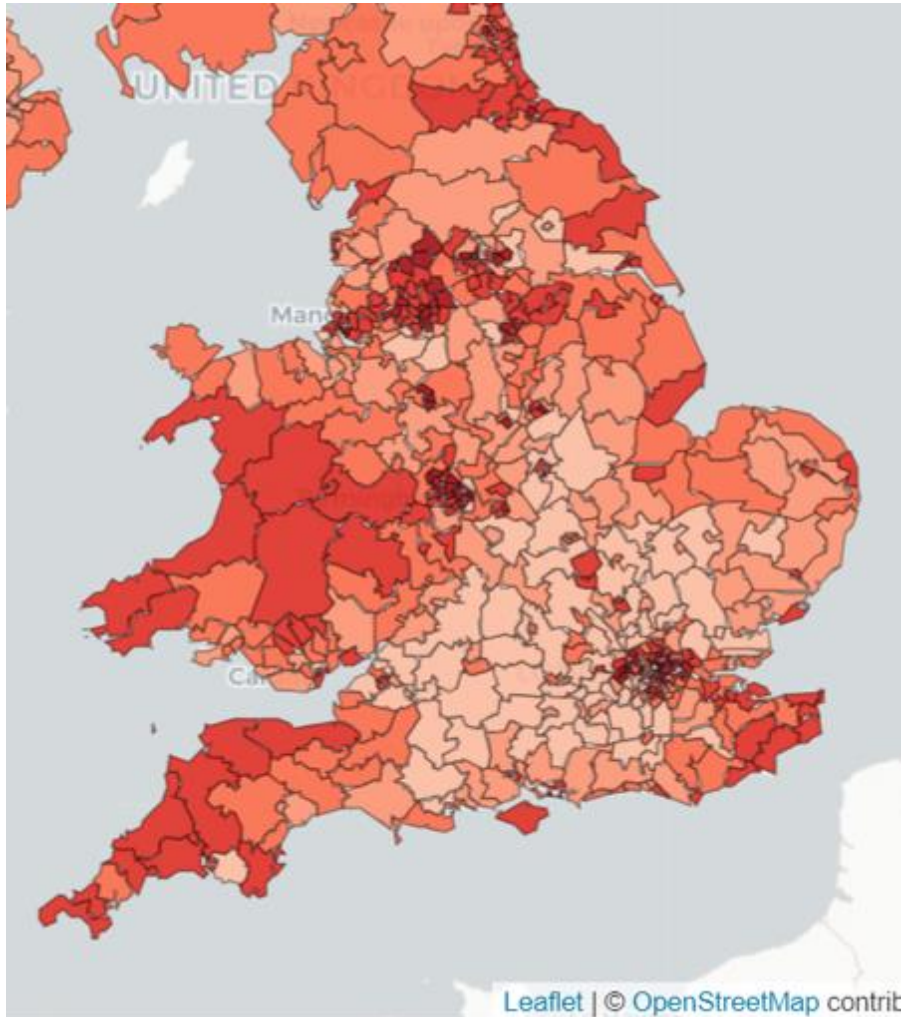
2019 IMD Deciles



2019 IDAOP1 Deciles



Child poverty across the peninsula – a working poor problem?



In 2019/20:

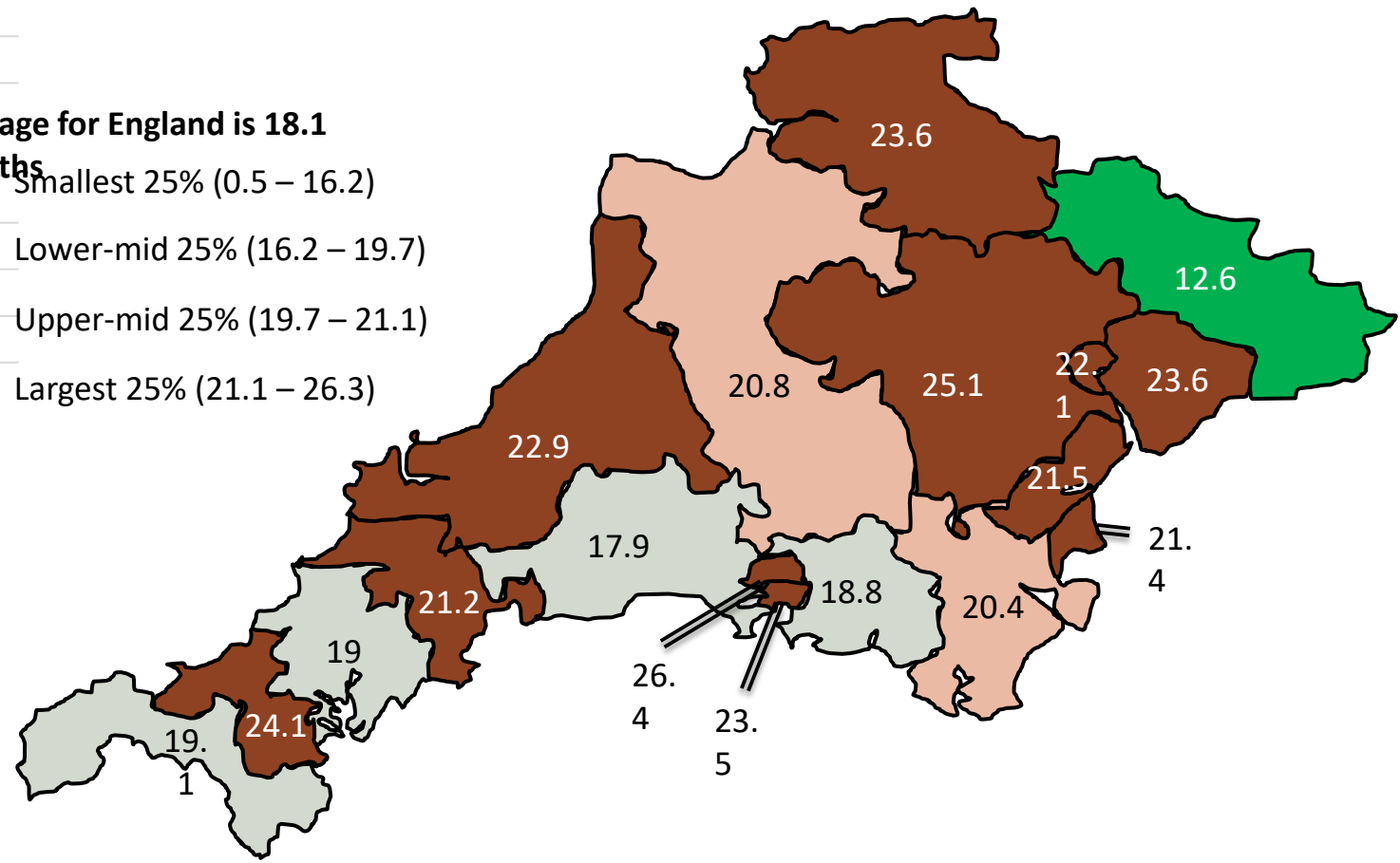
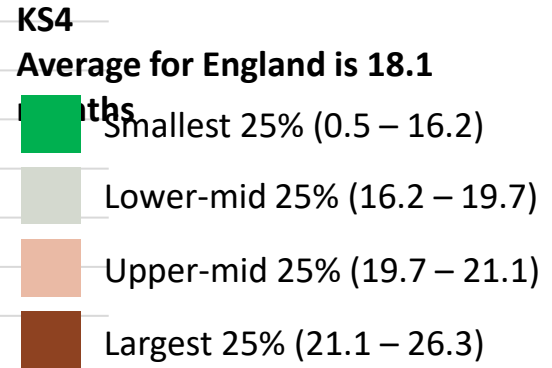
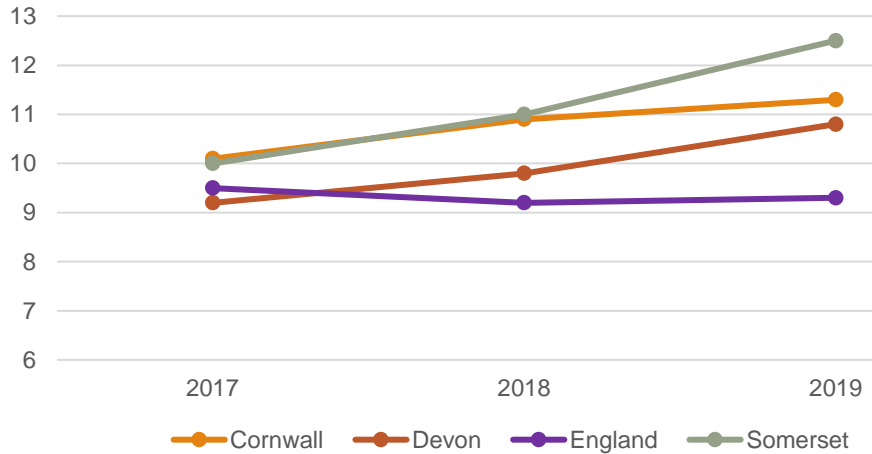
- Cornwall – 29% (Truro and Falmouth); 37% (North Cornwall)
- Somerset – 26% (Taunton Deane; Yeovil); **33% (Bridgwater & West Somerset)**
- Devon – 22% (South West Devon); 34% (Torridge & West Devon); Exeter – 26%
- Plymouth – 32% (Moor View); 34% (Sutton & Devonport)
- Torbay – 32%
- UK average – 30%; SW average – 25%

10,000 Airbnbs and nowhere to live: Cornwall's housing crisis

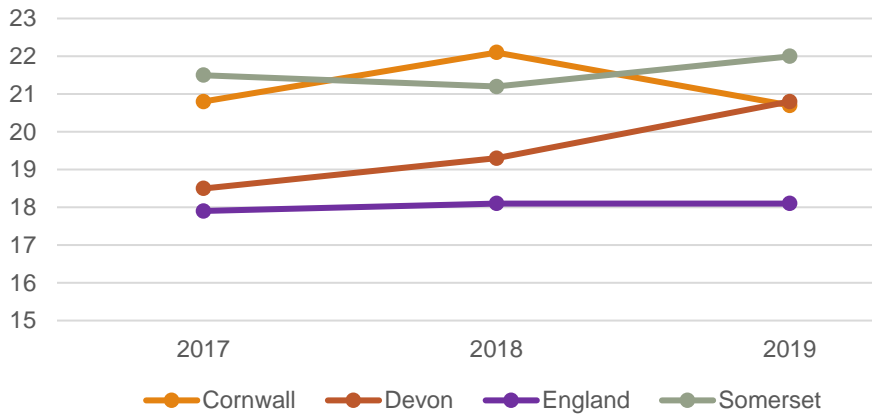
How a summer of staycations hit the renters living in one of the UK's most desirable destinations

KS2 gaps in Somerset widened significantly between 2017 & 2019

Disadvantage gap, months - primary, 2017-2019

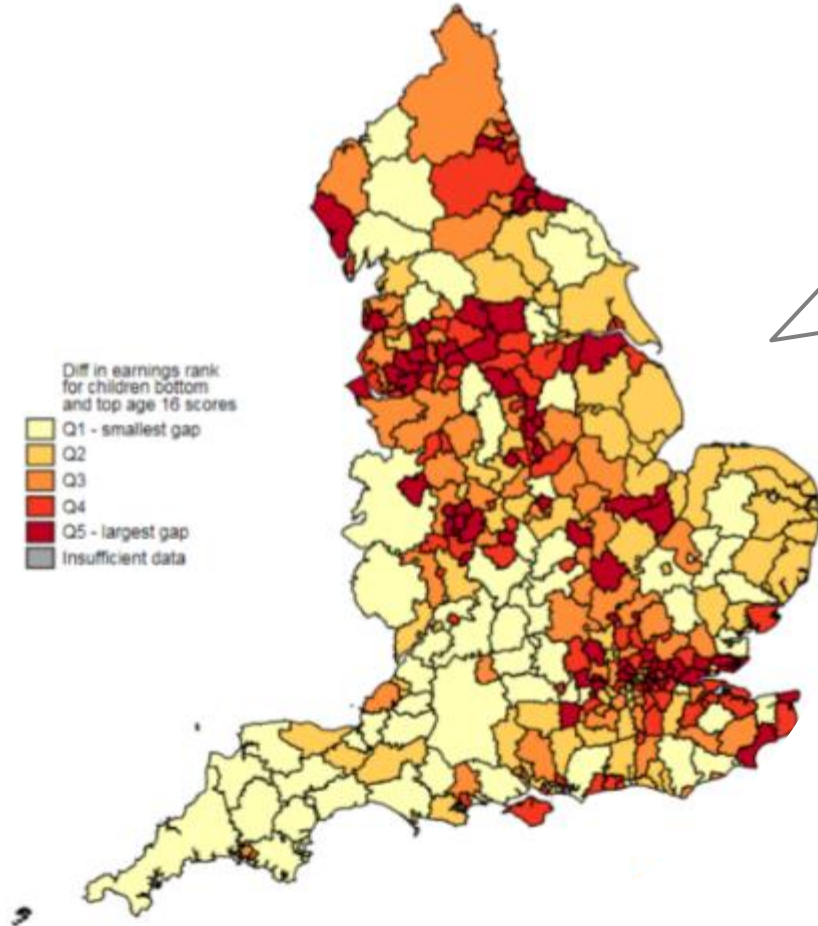


Disadvantage gap, months - secondary, 2017-2019



Data from Education Policy Institute (2020) *Education in England: Annual Report 2020, Geographical Analysis Pack*
 Data from Education Policy Institute (2019) *Education in England: Annual Report 2019, Geographical Analysis Pack*
 Data from Education Policy Institute (2018) *Education in England: Annual Report 2018, Geographical Analysis Pack*

No Second Chances: Lower returns to education in the region indicate a low skills equilibrium for young workers



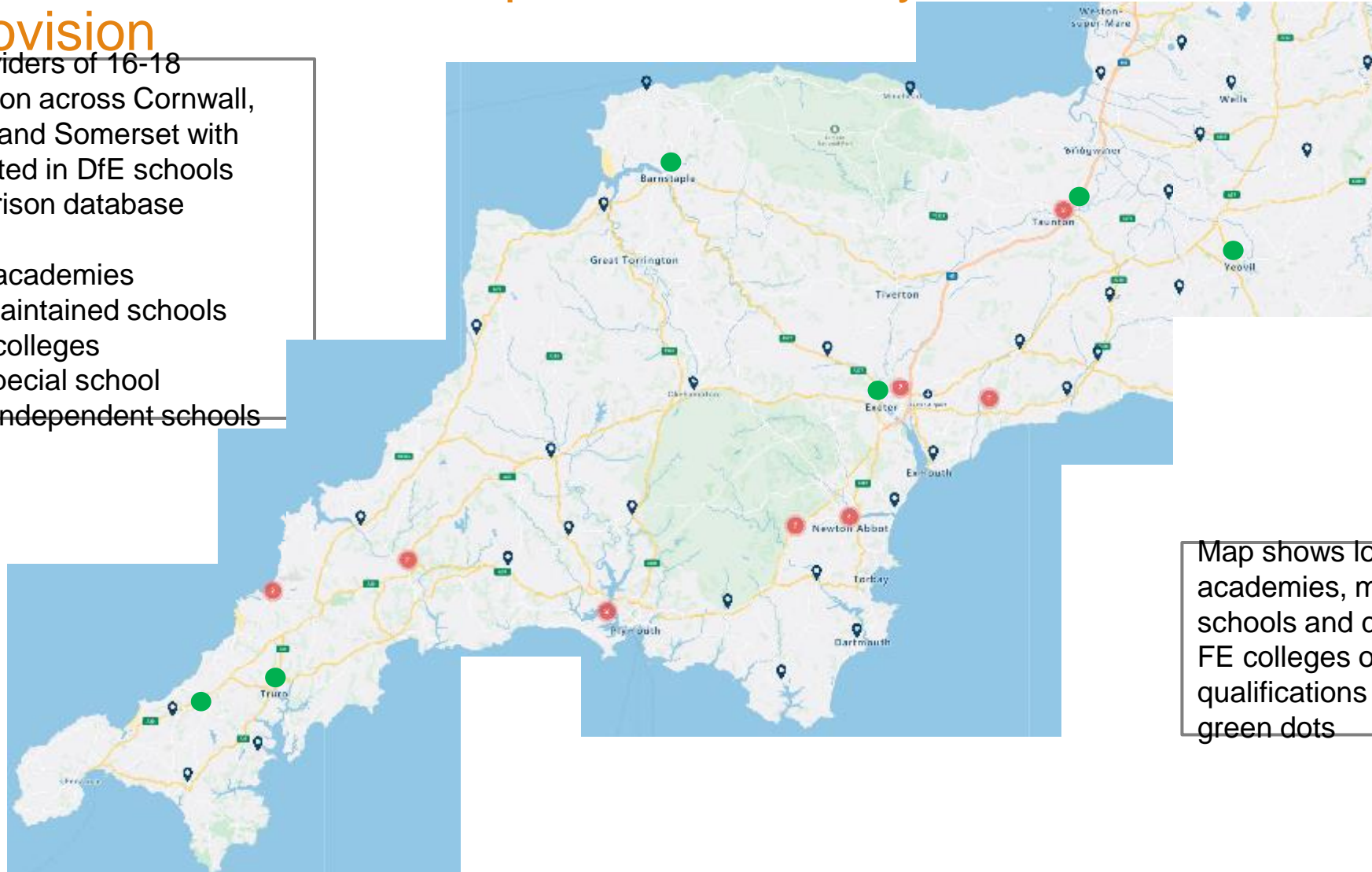
Gaps in earnings between top and bottom GCSE attainers: peninsula with mostly smallest gaps

May be rational for disadvantaged young people not to invest in education?

Distribution of state FE providers – many areas with limited local provision

83 providers of 16-18 education across Cornwall, Devon and Somerset with data listed in DfE schools comparison database

- 37 academies
- 9 maintained schools
- 10 colleges
- 1 special school
- 25 independent schools



Map shows location of 50 academies, maintained schools and colleges, with 6 FE colleges offering HE qualifications marked with green dots

Improvements to transport



- WSOA funded a focus group
- WSOA a piolet – direct bus from Dulverton to College reducing the travel time by 1.5 hours a day (reasonable)
- **Update: Saving of 2 hours a day. 😊**
- **Leaves at 7.30 not 6.50am and returns at 17.55 not 19.20pm**
- **Cost £900 a student**
- **Bid for mopeds – not supported**
- **Bike scheme**
- **Why do we give pensioners reduced transport tickets but not apprentices?**

What has the opportunity area done for West Somerset ?



- The power and energy of the community with capacity to help children and young people
- Partnership working including improved joint working between agencies.
- Improved working between schools
- Joint identification the issues facing community - lack of post-18 training opportunities, transport, data and services
- Joint problem-solving beyond schools
- Willingness the community to offer its resources to work with young people
- National Collaboration Outreach project working with Careers and Enterprise Company to develop aspirations and help young people plan their post-16 and post-19 progression routes